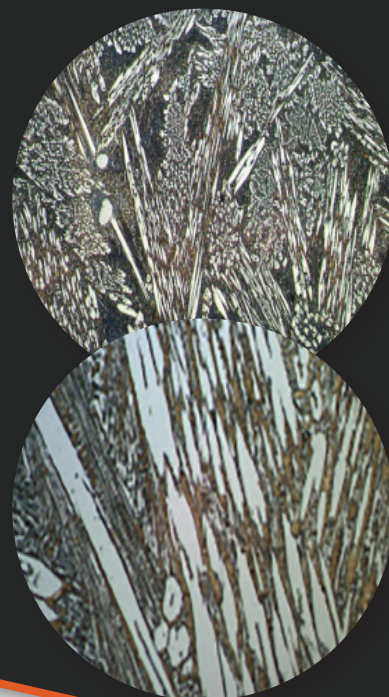


ACEslikalloy5000™

ACEslikalloy5000™ is a composite wearplate consisting of a hard abrasion resistant surface layer fused to a structural steel backing plate.

It contains a higher alloy content than SlikAlloy3000™, providing superior service life. The submerged arc manufacturing process generates a smooth surface texture and ultra refined hyper-eutectic microstructure in the overlay which provides excellent wear resistance against a wide range of wear mechanisms.



Base Material

The standard steel substrate is compliant with AS-3678 – grade 300 structural steel in thickness ranges from 4-55mm. Other grades can be supplied upon request.

Overlay Material

The overlay material is an austenitic complex chromium carbide alloy consisting of a uniform, high density distribution of fine primary MC and M₇C₃ carbides in a matrix of complex carbide, martensite and austenite, compliant with AS/NZS 2576-2455.

Material Composition

Chemical Analysis (minimum)	4.4 %C, 28 %Cr, 1.0 %Mn, 0.5 %Si, 4.0% W
Hardness (typical)	650 HV50
Micro Hardness – Matrix	Up to 650 HV
– Carbide	Up to 2500 HV
Total Carbide content (min)	55%
Operating Temperature	Up to 650°C continuously

For Additional Information

Call ACE on +61 8 9303 9944 or email info@australce.com



**PROTECTING ASSETS
ENHANCING EFFICIENCY**

Australian Ceramics Engineering Pty Ltd. | ABN 89 153 041 975
67 Excellence Drive, Wangara WA 6065 | +61 8 9303 9944
info@australce.com | www.australce.com