

Sintered Silicone Carbide Liners

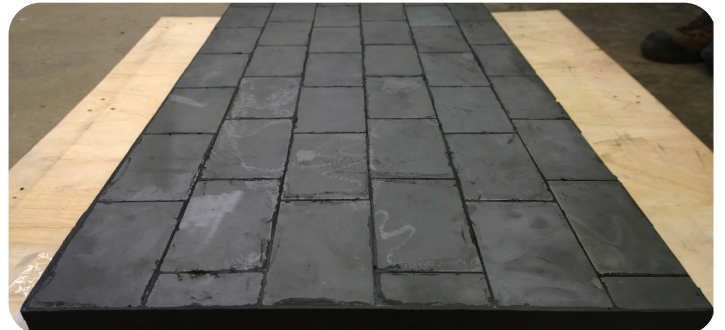
ACEsilica™ wear liners are a premium performing product designed specifically for increased resistance to high abrasion, particularly in harsh bulk materials handling applications.

ACEsilica™ liners offer the highest possible abrasion resistance with moderate impact resistant properties.

ACEsilica™ liners can be used on their own, or in combination with other liner products in the ACE product range, providing the ability to overcome client specific wear and impact issues.

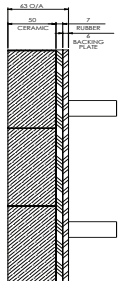
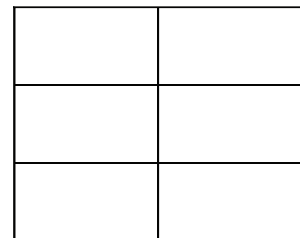


| Item | Unit | Data |
|----------------------------------|-------------------|--------------|
| Temperature of Application | °C | ≤1380°C |
| Density | g/cm ³ | 3.02 |
| Porosity | % | |
| Bending Strength | Mpa | 250 (20°C) |
| | Mpa | 280 (1200°C) |
| Modulus of Elasticity | GPa | 330 (20°C) |
| | GPa | 300 (1200°C) |
| Thermal Conductivity | W/m.k | 45 (1200°C) |
| Coefficient of Thermal Expansion | K-1 ×10-6 | 4.5 |
| Mohs Hardness | | 9.60 |



BENEFITS

- Superior abrasion resistance over alumina liners
- Increased heat dissipation
- Improved flow efficiency over standard alumina ceramic
- Low cost per tonne benefit



For Additional Information

Call ACE on +61 8 9303 9944 or email info@australce.com

